

Bulk liquid electrochemical cell

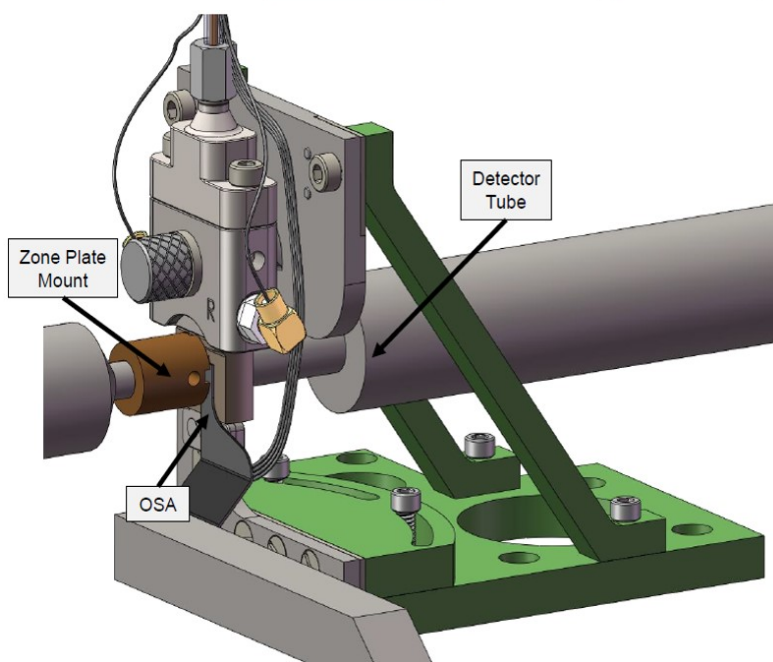
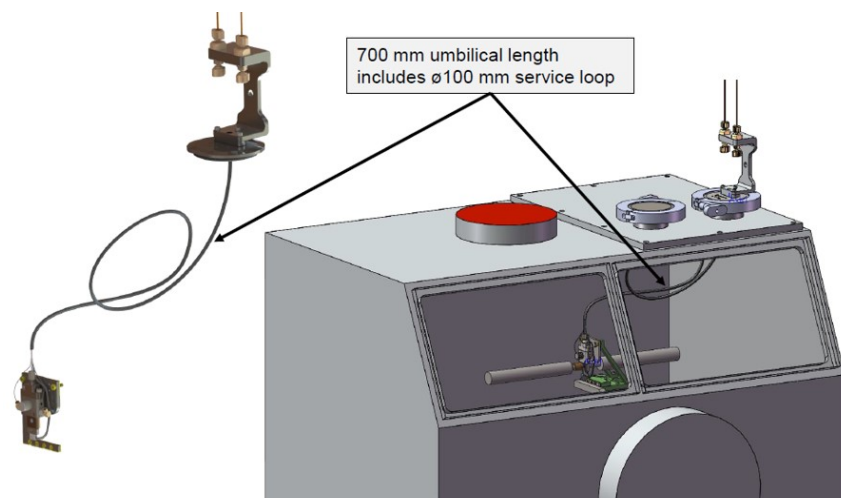
Beamline: Industrial Science

Contact: Jigang Zhou

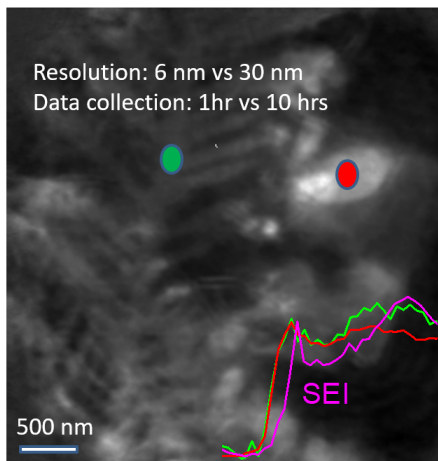
A 6-electrode device for real time in-situ studies of electrochemical processes under a continuous flow of electrolytes. The device was made using in-situ TEM technology, and designed to fit the SM standard sample holder.

Battery materials can be charge cycled while simultaneously acquiring soft x-ray absorption maps to track structure change. Other applications include electrochemistry, corrosion, electroplating, electrolysis, fuel cell materials, etc.

More information can be found in Lim et al., Science 353, 566-571 (2016).



Pinpointing chemical origins of dendrite formation in aqueous zinc ion batteries via in-situ and ptychography STXM



**Jigang Zhou, Jian Wang, Adam Leontowich,
Toby Bond, Jay Dynes, Burke Barlow, Joel Reid
Canadian Light Source Inc.**

